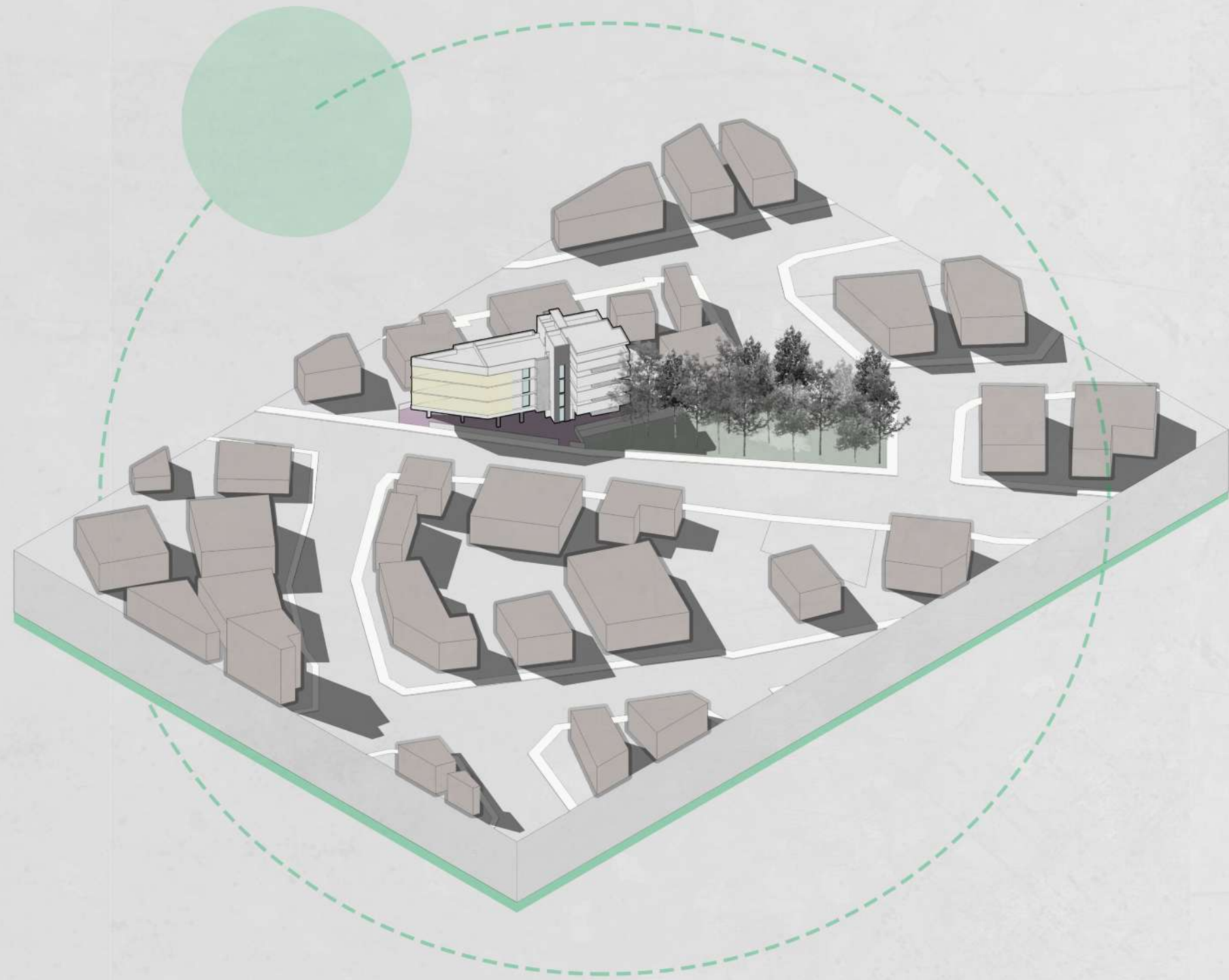


# ANGLE RESIDENCE

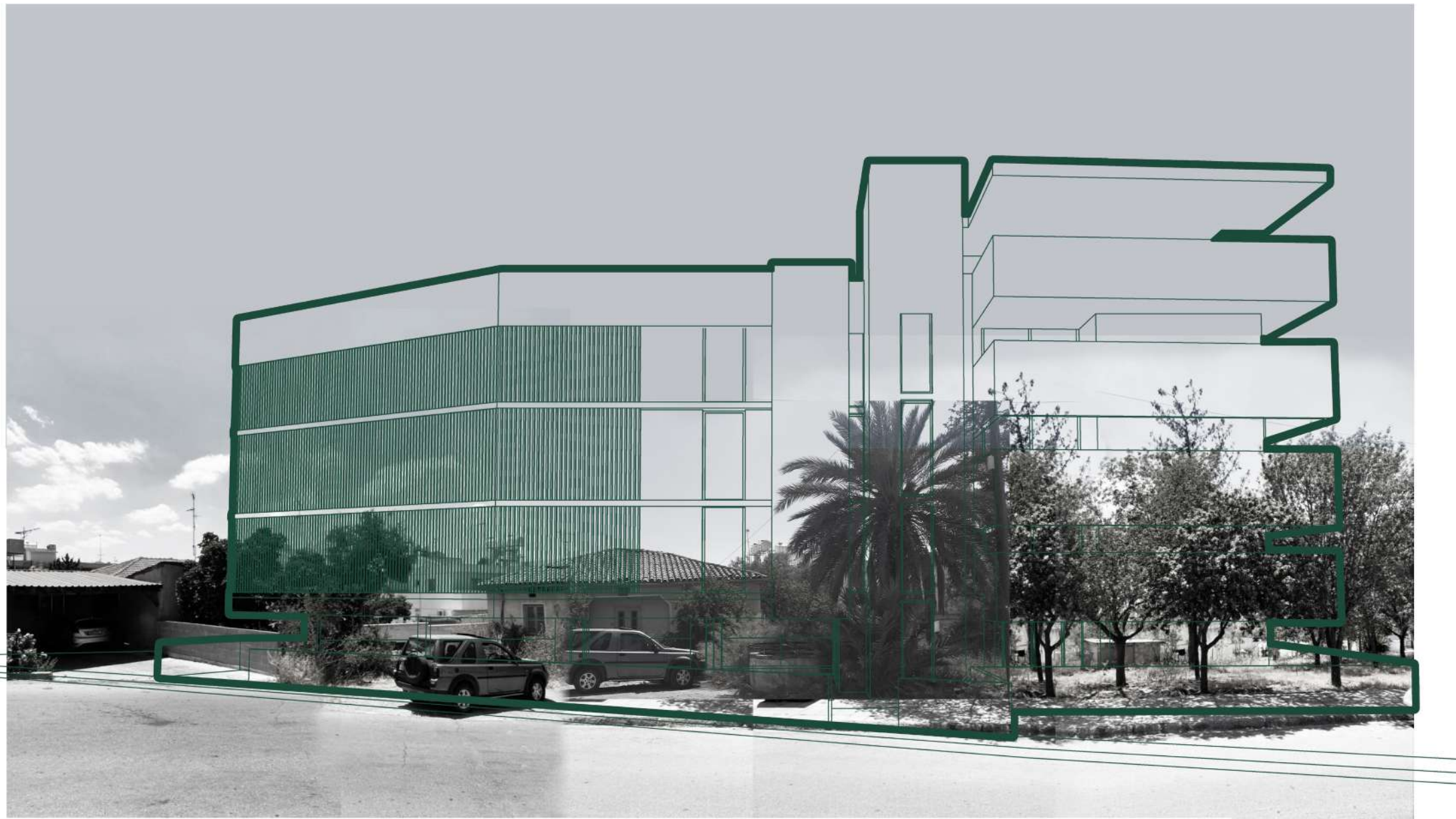
A PROJECT BY



PAFITI  
ARCHITECTS



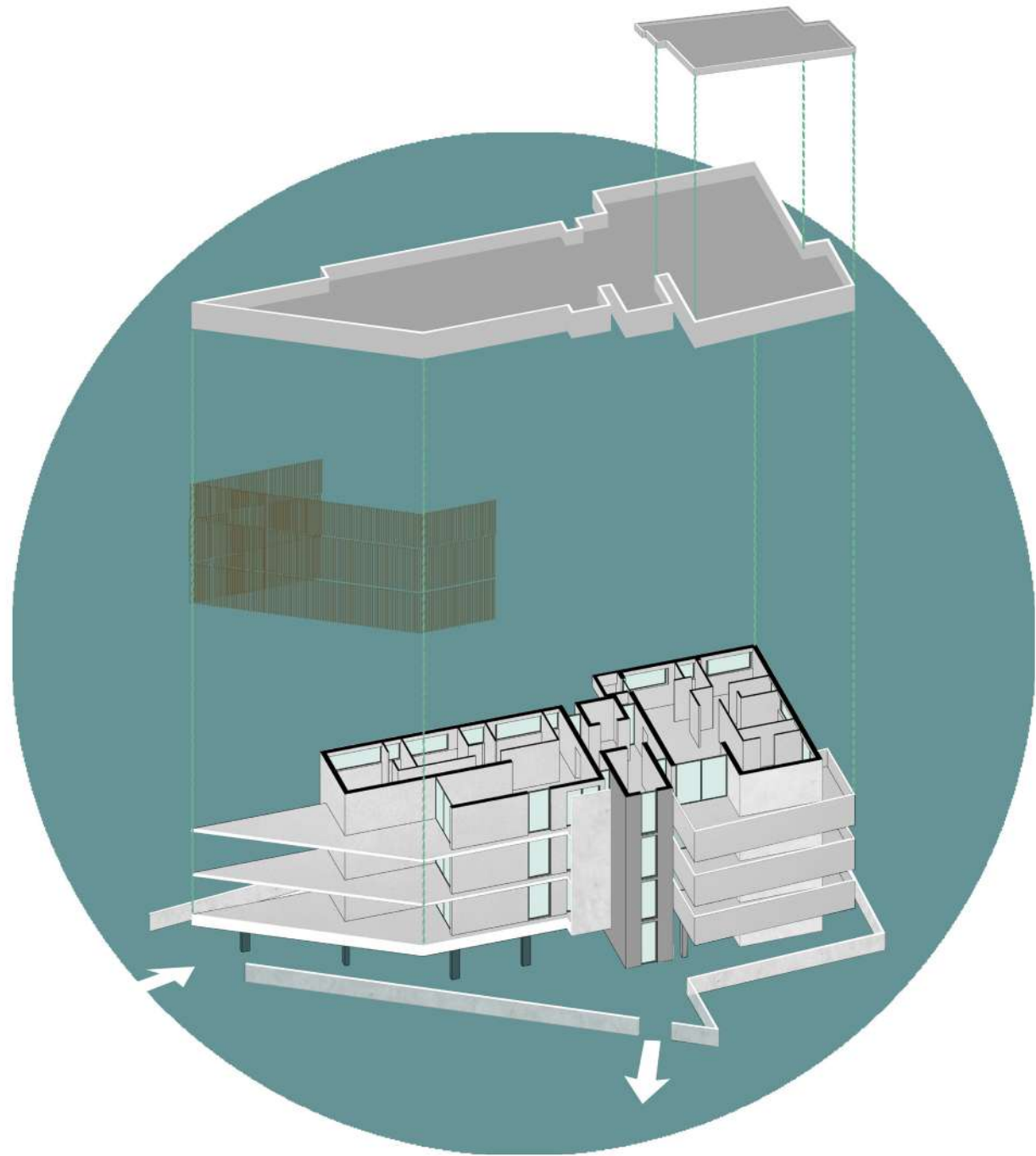




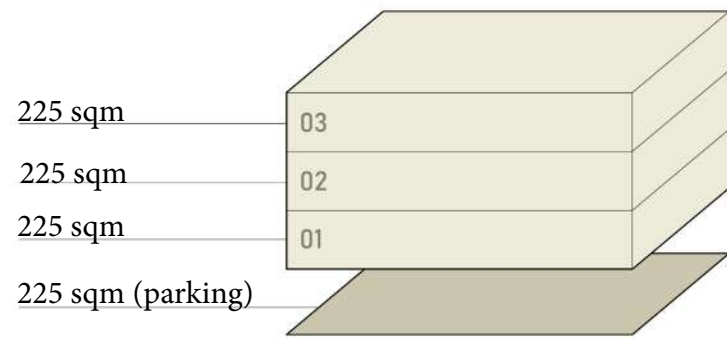
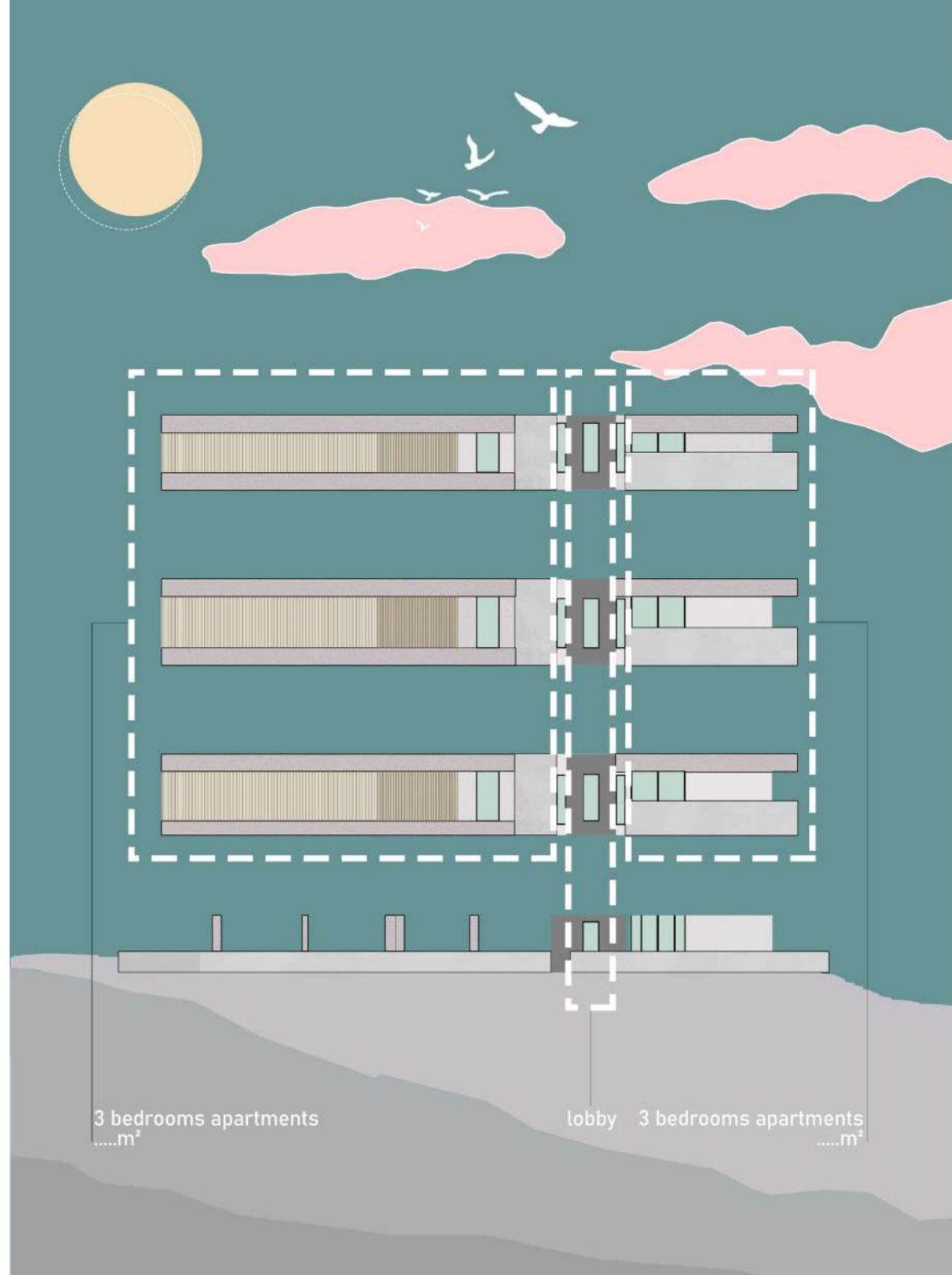
## ANGLE RESIDENCE

ARCHITECTS DESCRIPTION

THE ARCHITECTURE OF THIS RESIDENTIAL BUILDING AIMS TO SHAPE A HARMONIC COMPOSITION OF PRIVACY, WITH A SEAMLESS FACADE, THAT COMES TO PROVIDE A STRONG IDENTITY TO ITS COMMERCIAL SURROUNDING NEIGHBORHOOD.



EXPLODED AXONOMETRIC



2x3 BEDROOMS [95+95+35(stairs)]

2x3 BEDROOMS [95+95+35(stairs)]

2x3 BEDROOMS [95+95+35(stairs)]

12 - 13 PARKINGS

1st floor:  $(850\text{€} \times 2) \times 12 = 20.400/\text{year}$

2nd floor:  $(850\text{€} \times 2) \times 12 = 20.400/\text{year}$

3rd floor:  $(1050\text{€} \times 2) \times 12 = 25.200/\text{year}$

Total = 66,000€/year

#### ΣΥΝΟΨΗ:

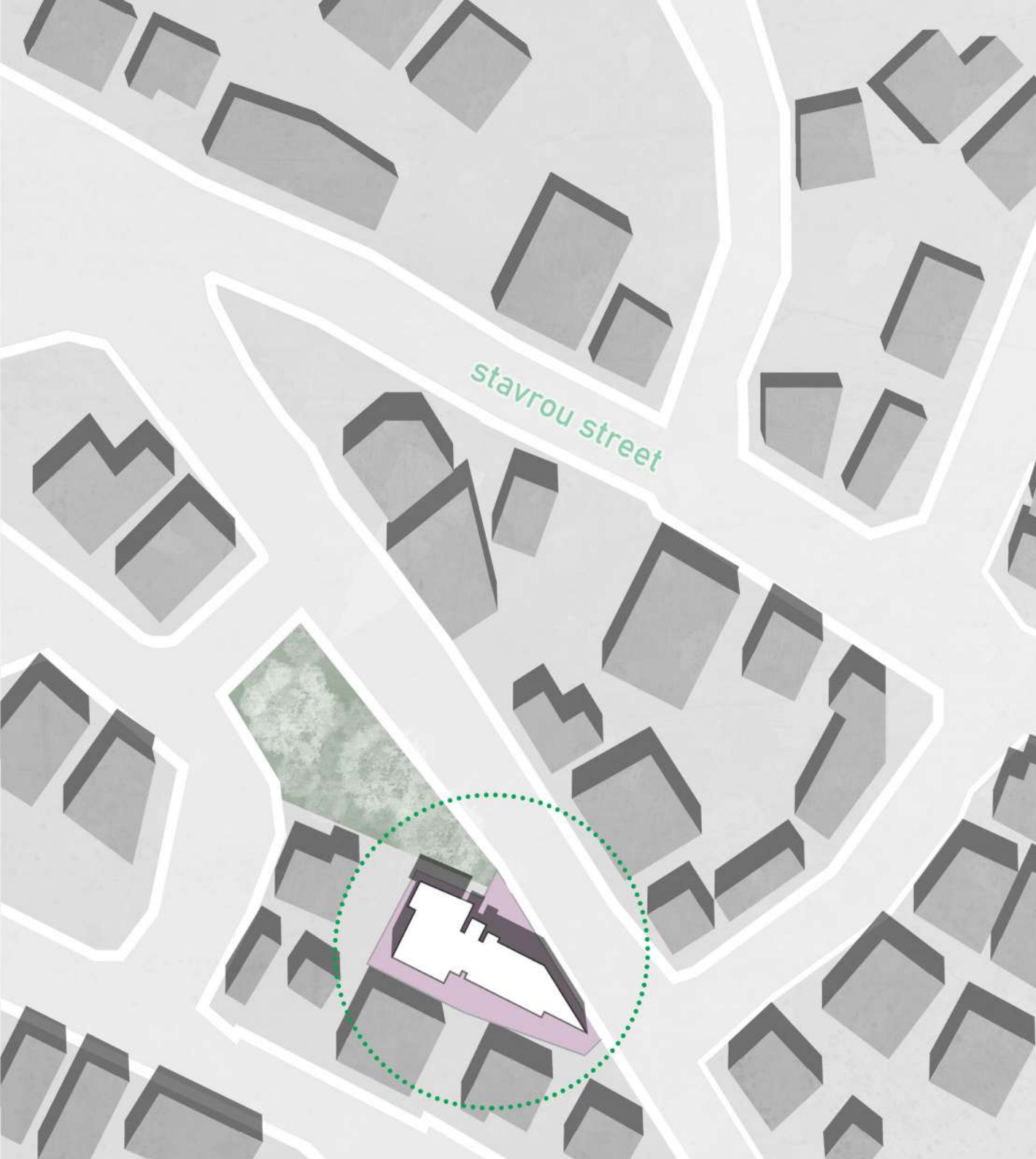
AREA - 751 sqm

RENT - 66, 000/€ year

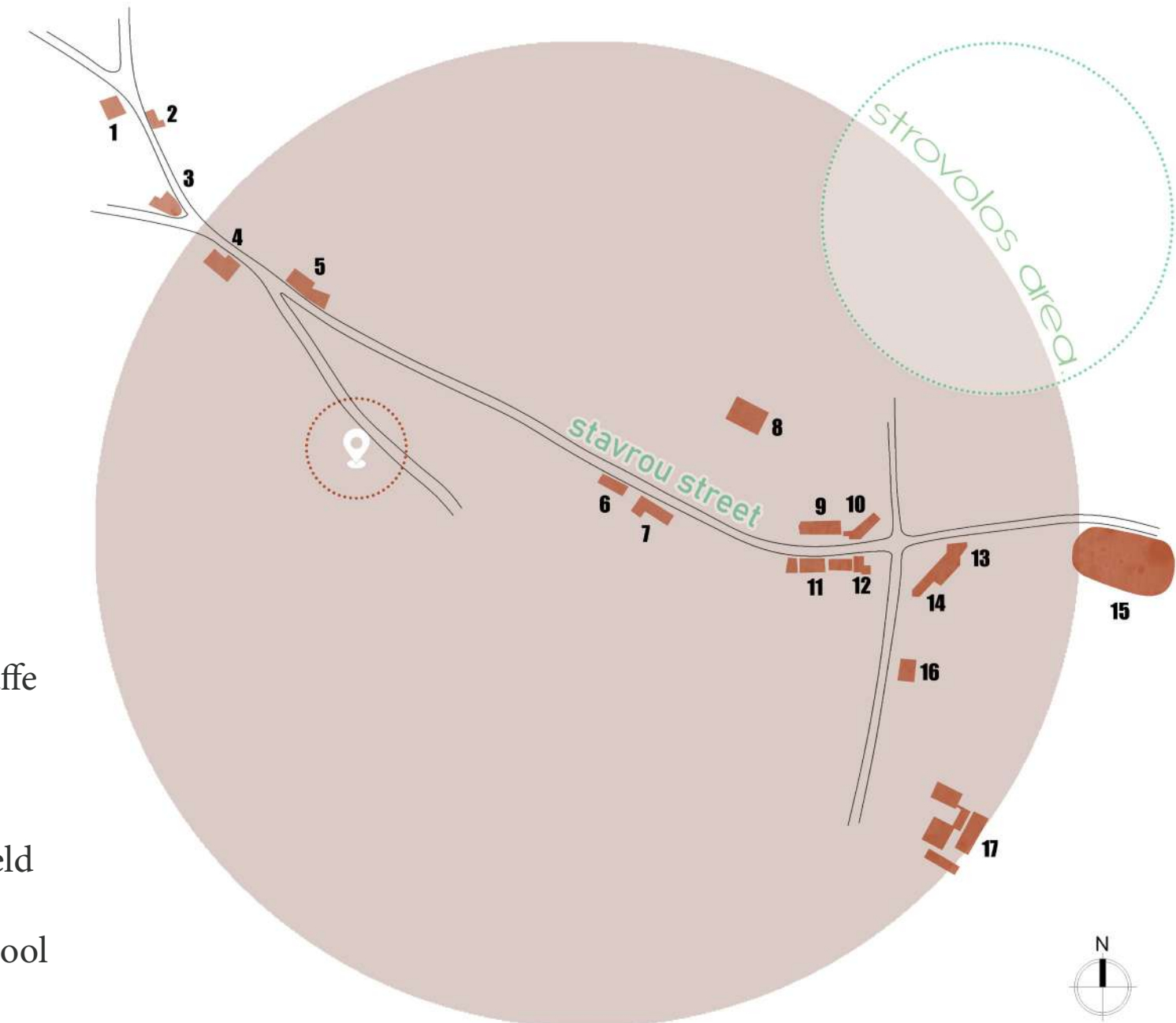
COST - 676.620 €

REPAYMENT - 10.2 years





1. Hub pub & eatery
2. Cellar 27
3. Glorian Jean's Coffees
4. Toy store "Mavros"
5. Mikel coffee
6. Restaurant
7. Costa coffee
8. Costa coffee
9. Grind caffe
10. Coffee island
11. Shopping distr
12. Kiosk
13. Press Caffè
14. Stores
15. Futsal field
16. High school
17. Bakery







## ANGLE RESIDENCE

The building provides private roof gardens for both apartments on the top floor.



## ANGLE RESIDENCE

It has been designed to provide freedom for the occupant and flexibility between privacy and natural lighting, since the facade works as a natural skin to the buildings identity rather than external shadings.

The Shape of the balconies work as an extension space of the interior layout, that maximizes its feeling of enclosure.







own the  
lifestyle!

In the adjacent street of a busy road, lies this pocket of green space that we choose to design our Residential Apartments.

They connect with all the amenities, making it an ideal location for anyone who wishes to enjoy Urban Life to the maximum with all the benefits of a quite area.

We have strategically design the layout of the apartments in order to maximize views and keep privacy as main priority.

A harmonious living environment.

**ANGLE RESIDENCE**





**ANGLE RESIDENCE** apartments provide an abundance of space to live life to the fullest.

The seamless facade that aims to give an identity to the buildings and maximize privacy and security.

We embrace a feeling of freedom for the occupant, through this envelope of balconies and facade designs.

With generous layouts that are designed to make the most of the sweeping vistas of the surrounding area, you'll enjoy a harmonious environment in your apartment.

**ANGLE RESIDENCE**



## THREE VIEWS

This 12 meters tall building that offers spacious balconies facing north, hides from the world offers the residence three distinct views: a wild view towards the pine field; an upward view towards the sky, and a long, narrow horizontal view towards the city. These views have decided the appearance and layout of the building.



## HIGH OFF THE GROUND



We named the project due to its angular shape, that allowed us to get strategic views from balconies, but also to isolate apartments and enhance privacy without enclosure.



Our open plan living areas designed for total comfort and ease, build for the modern lifestyle.







Refined living environments that offers  
the best of indoor and outdoor living.

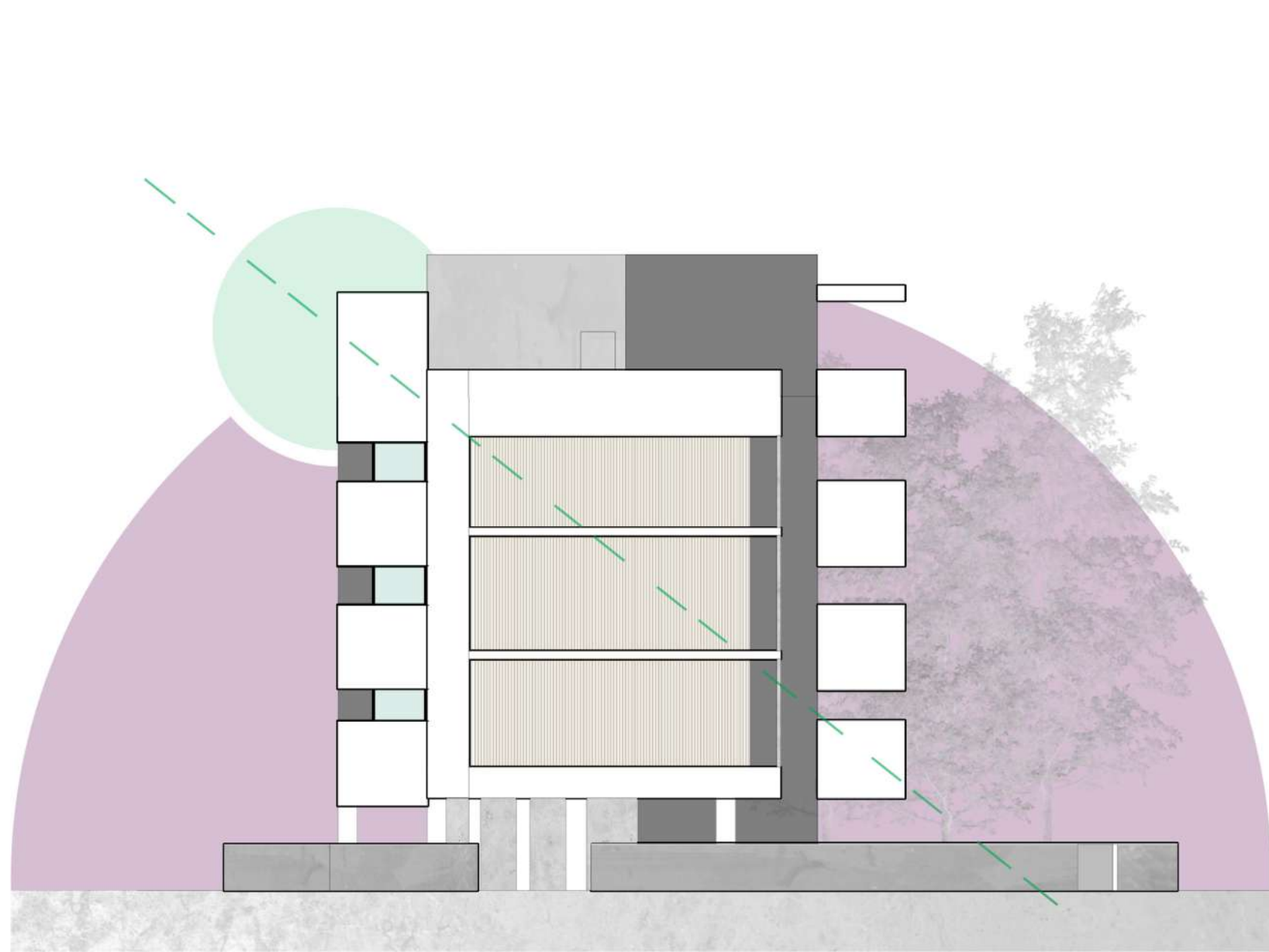
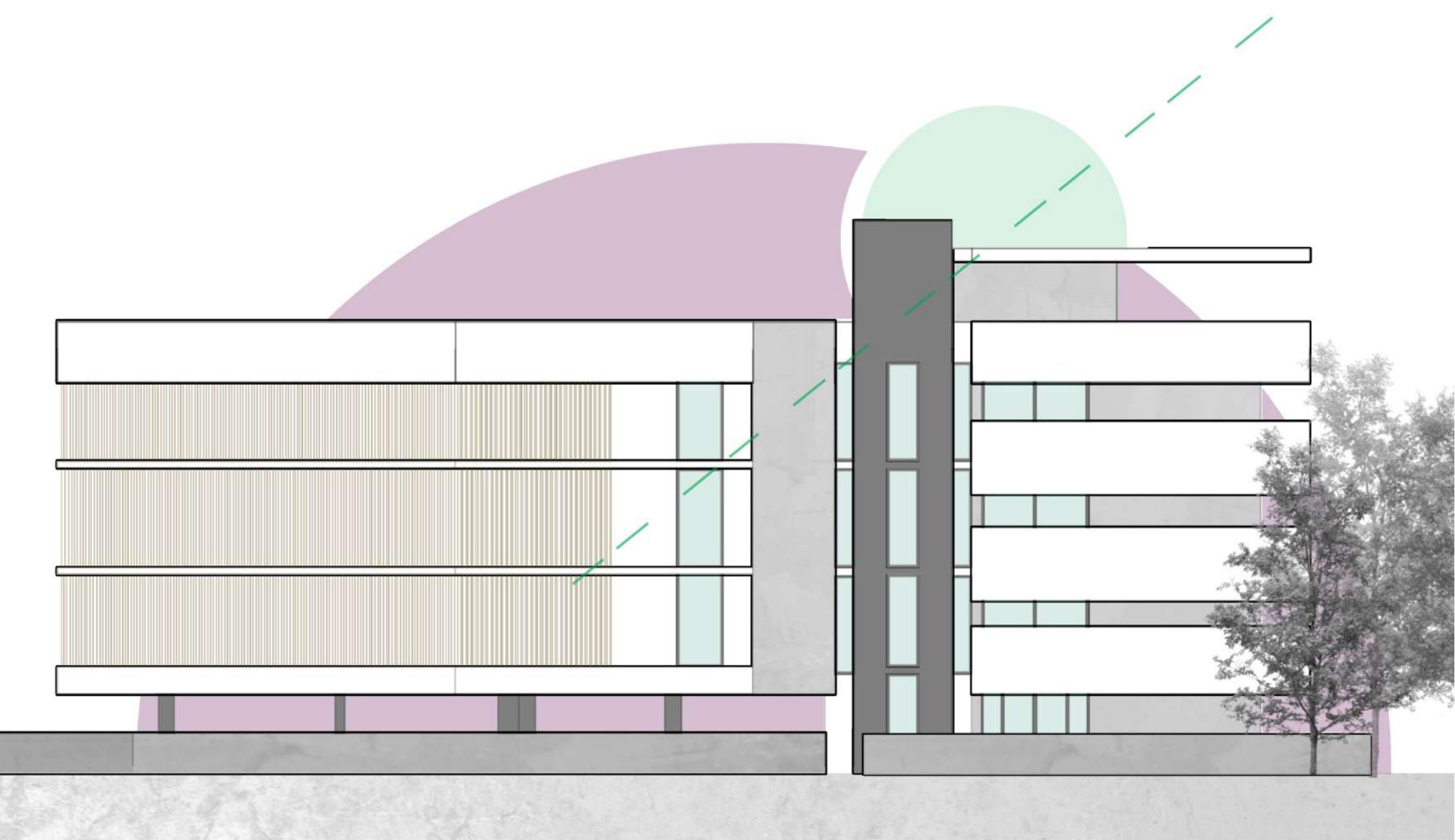


THE APARTMENTS  
COMBINES  
CONTEMPORARY  
ELEGANCE WITH  
SUBTLE TOUCHES



Simply inspired to the last detail. A calm palette with an urban edge, a place to live, share, grow. Clean accents and simplicity are key when speaking about "Angle's" bedroom design. We embrace a "less is more" outlook in life and believe simple spaces are calming. The minimalist decorating style that Angle Residence embraces eliminates most knickknacks, ornate trim, busy patterns, and wild color schemes to make space for functional, necessary, and soothing design elements. These minimalist bedrooms are serene clean, and uncluttered. We'll highlight the elements in each bedroom that give these pared-down rooms loads of comforting character.







# FLOOR PLANS



ROOF GARDEN





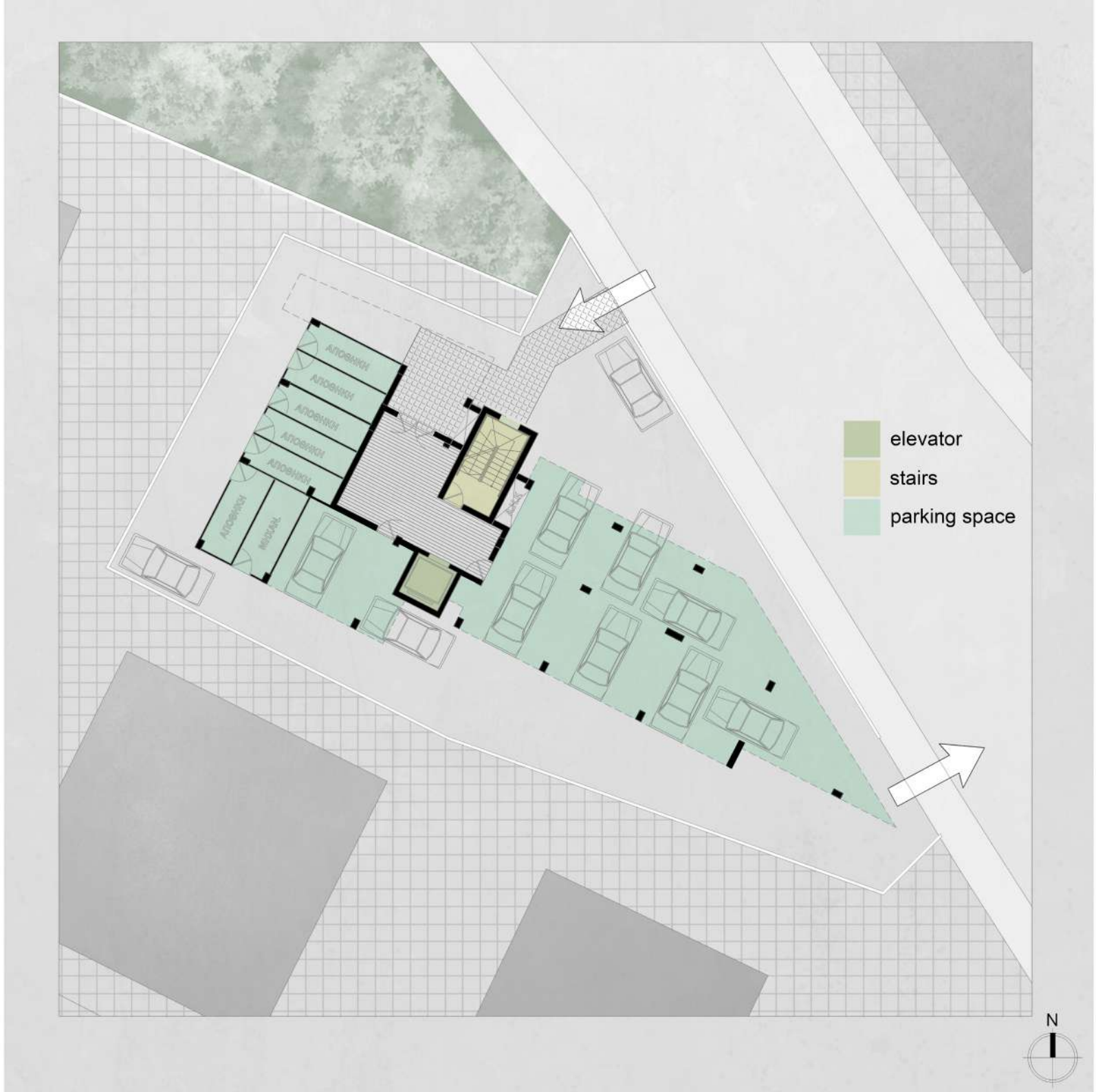
FLAT 101, 201, 301

FLOOR	1,2 & 3
BEDROOMS	3
FLAT AREA msq	104 sqm
COVERED VERANDAS msq	42 sqm
EXPOSED VERANDAS msq	-
STORAGE ROOM (GROUND FLOOR)	1x8 sqm
PARKING SPACE	2
TOTAL AREA	146 sqm

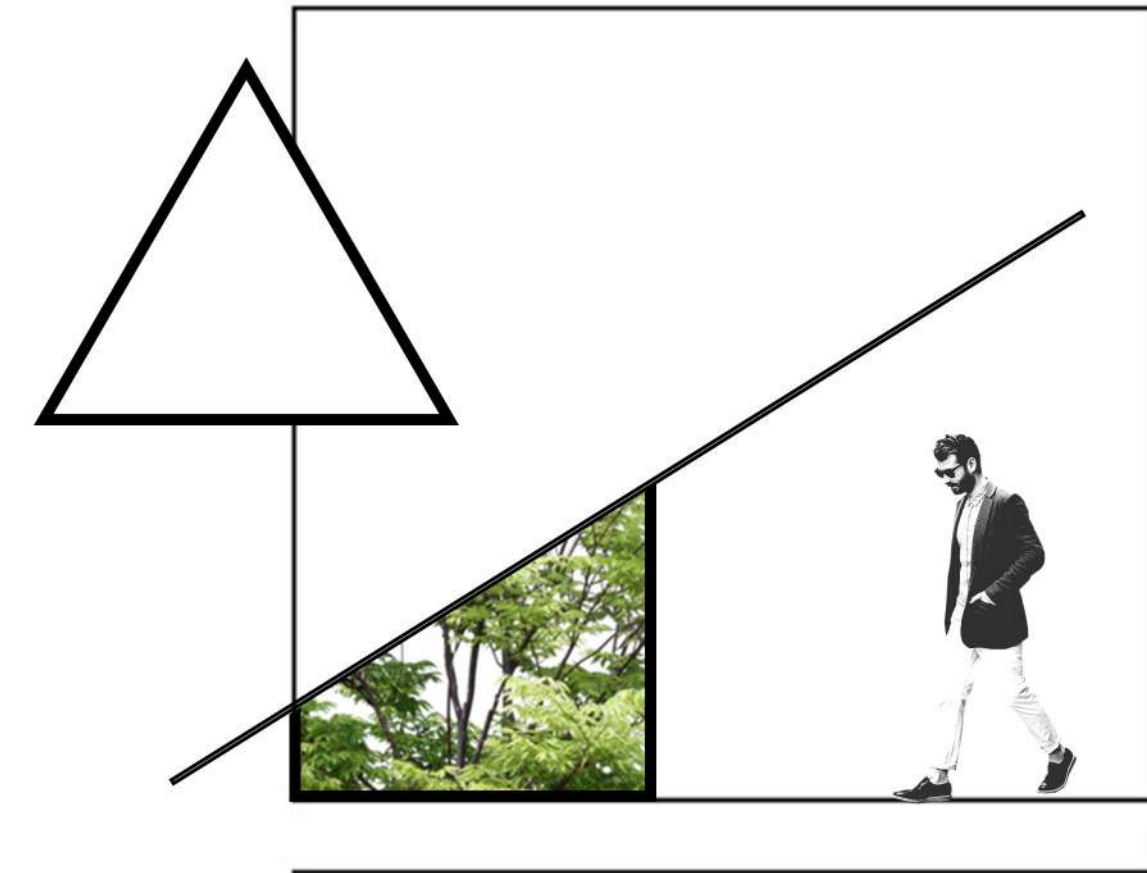
FLAT 102, 202, 302

FLOOR	1,2 & 3
BEDROOMS	3
FLAT AREA msq	105 sqm
COVERED VERANDAS msq	34 sqm
EXPOSED VERANDAS msq	-
STORAGE ROOM (GROUND FLOOR)	1x8 sqm
PARKING SPACE	2
TOTAL AREA	138 sqm

TYPICAL FLOOR







## ANGLE RESIDENCE

A PROJECT BY





## ABOUT US

**PAFITI ARCHITECTS** is an innovative architecture studio based in Nicosia, Cyprus. Our capabilities include, architecture, urban strategies, tangible designs, contemporary ideas and visual communications.

PAFITI ARCHITECTS was founded in 2017 by Yiannis Paphitis, after a wide experience in Europe and Dubai - UAE, collecting various design and presentation skills.

Our proposals merge through a creative narrative while transplanting information provided by the context, conditions and program.

We engage through architecture, on people, culture and tradition.

